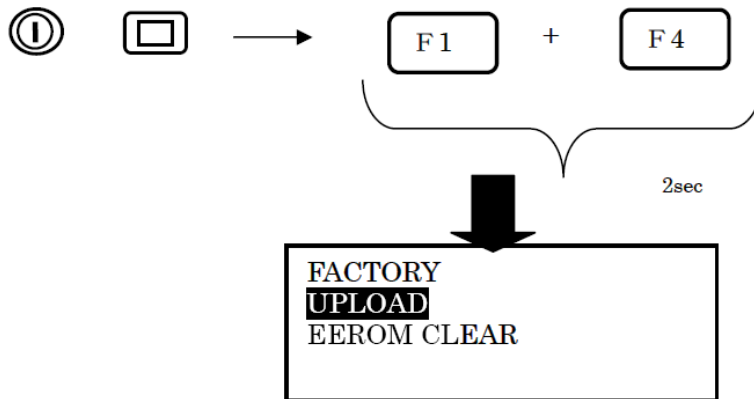


GB-1000 firmware upload method

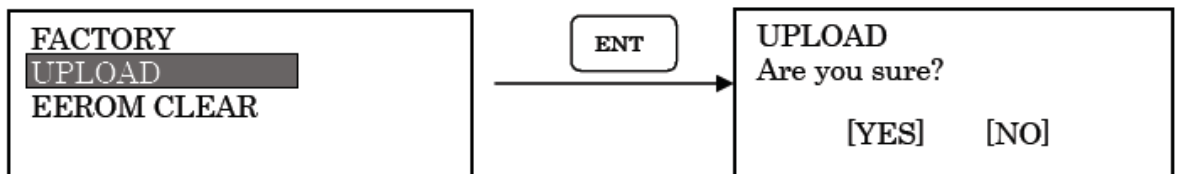
041307

Do not turn off the receiver during uploading firmware. And do not disconnect the data cable. Please use the AC adaptor and full charged batteries.

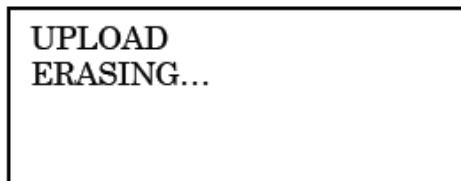
1. Turn off the GB-1000.
1. Connect PC and Port-A on GB-1000 by data cable. Insert full charged battery to GB-1000. Do not connect AC adaptor on this time.
2. Change to the Factory mode. There are two methods.
Press and hold the Main Menu button and push the Power button.
When the Opening screen (GB-1000 logo) is shown, release the Menu button, Then press and hold the F1 and F4 button for 2 seconds.



3. Select "UPLOAD", then press ENT button.



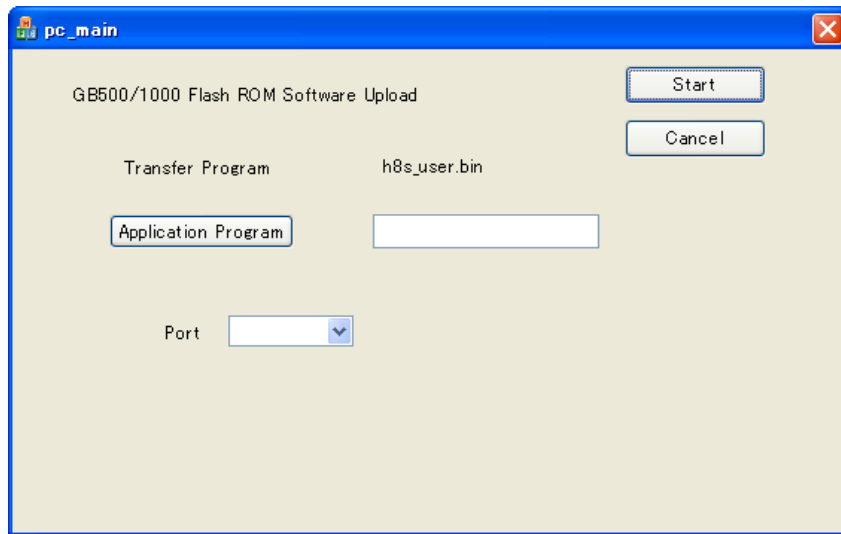
4. Press F2 button. The receiver will become upload mode.



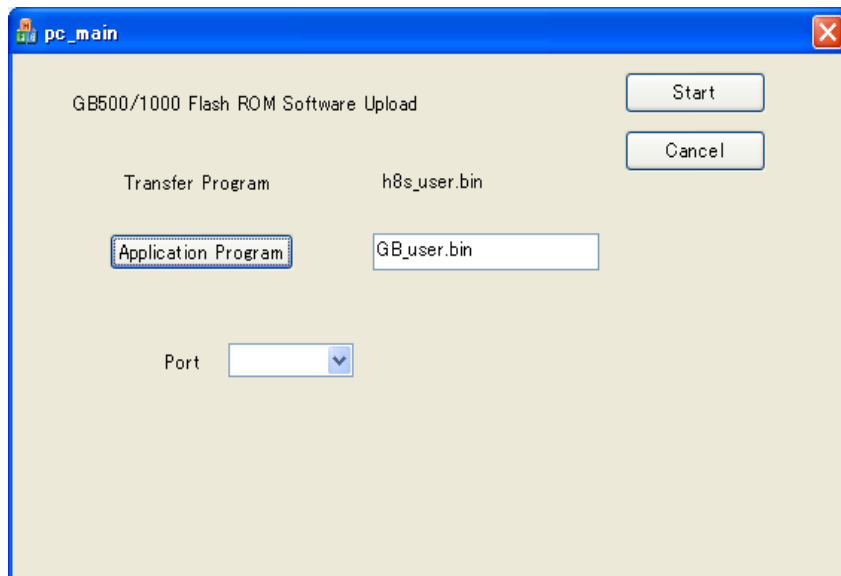
***NOTE: Do not turn off the receiver during the firmware uploading.**

5. Connect AC adaptor to External power port.

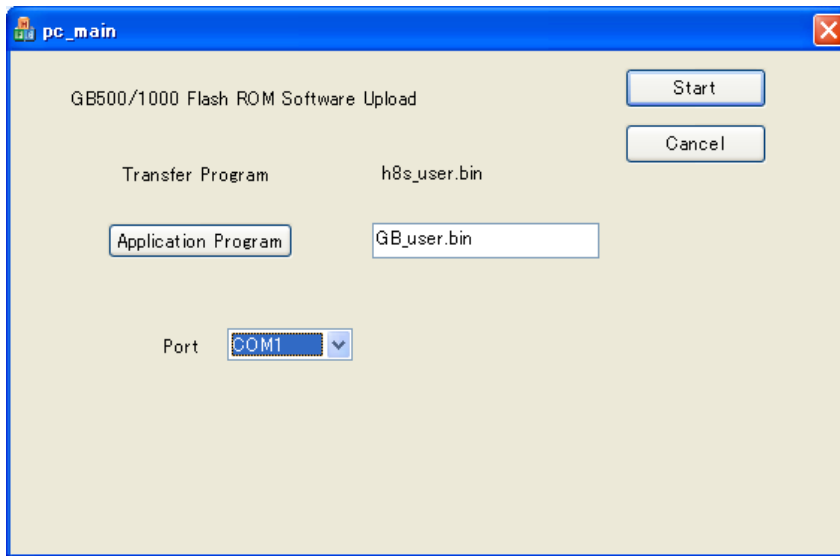
6. Execute the “GBpc_main.EXE” program



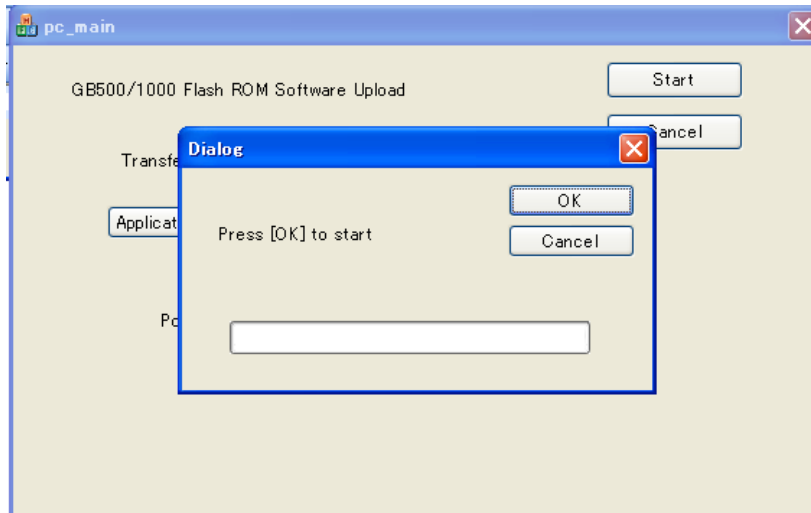
7. Click “Application Program”, then select “GB_user.bin” file



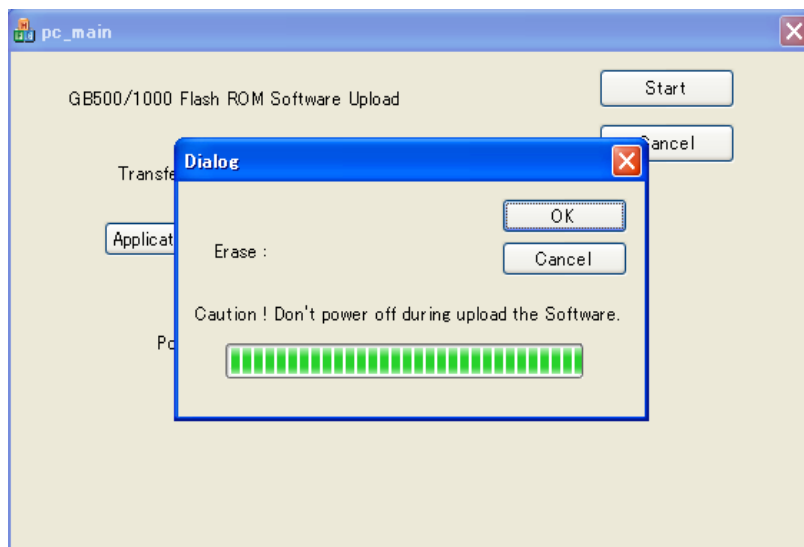
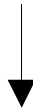
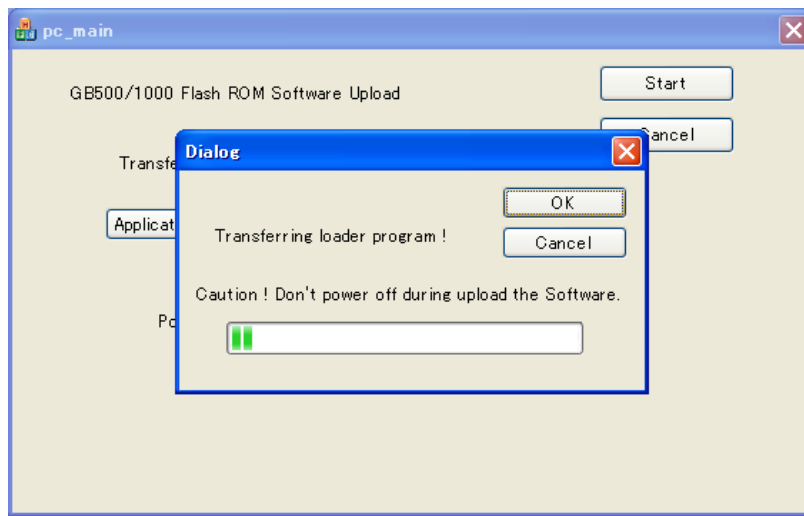
8. Select the port of PC which connects the data cable. (ex. COM1)

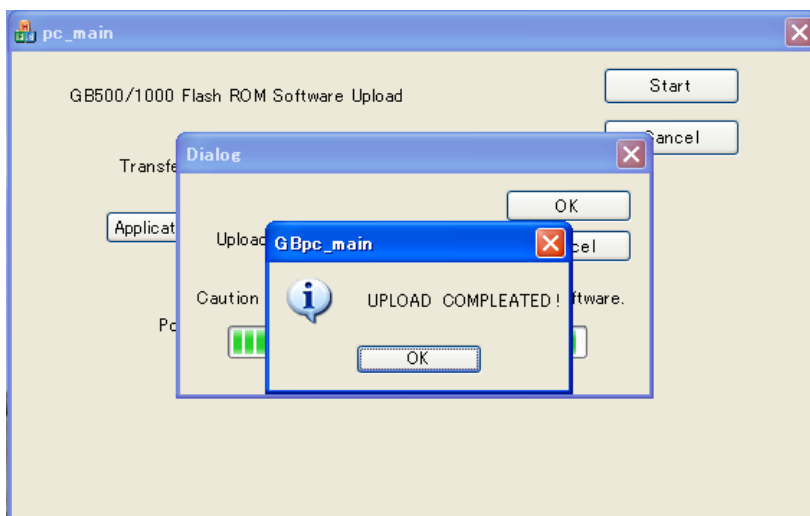
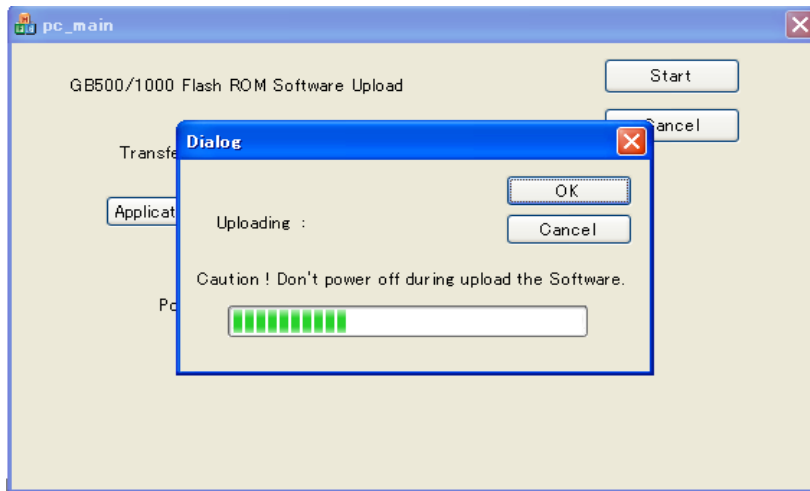


9. Click "Start" button. Then "Dialog" screen appeared. Press "OK" button.



10. The program starts uploading.





11. When the upload is finished, the UPLOAD COMPLETED message appears.
12. Turn off the receiver by taking out the battery and the AC adaptor. (Because the power button does not work.)
13. Restart the receiver.
14. Check the installed firmware version by GB-1000 internal controller.
The version can be checked at "MAIN VER." On [HARDWARE INFORMATION] - [HARDWARE] menu.