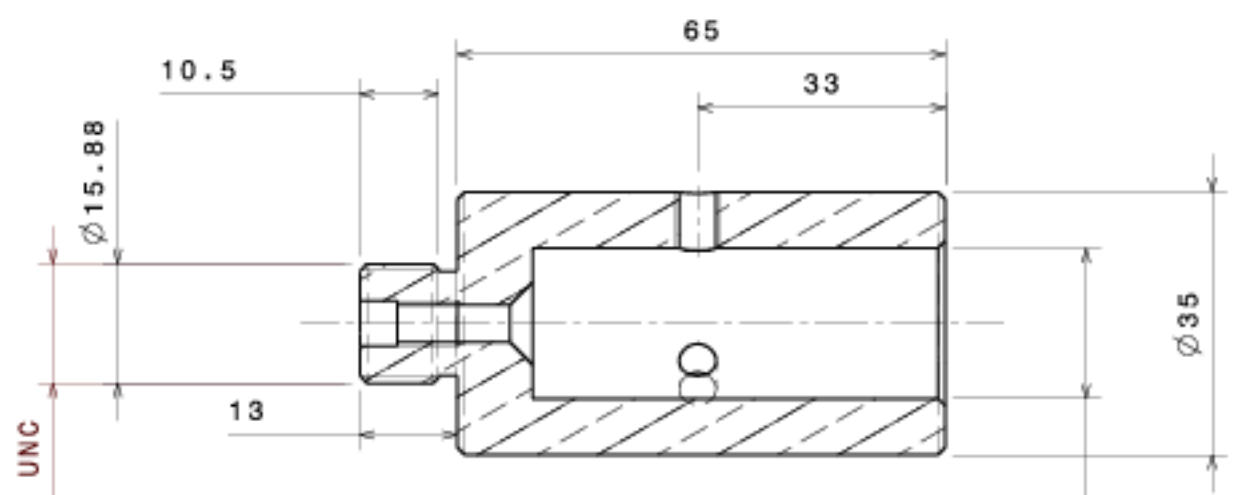


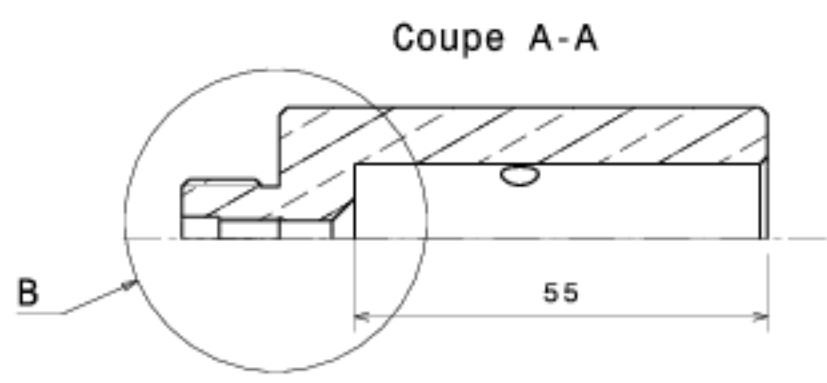
H G F E D C B A

4

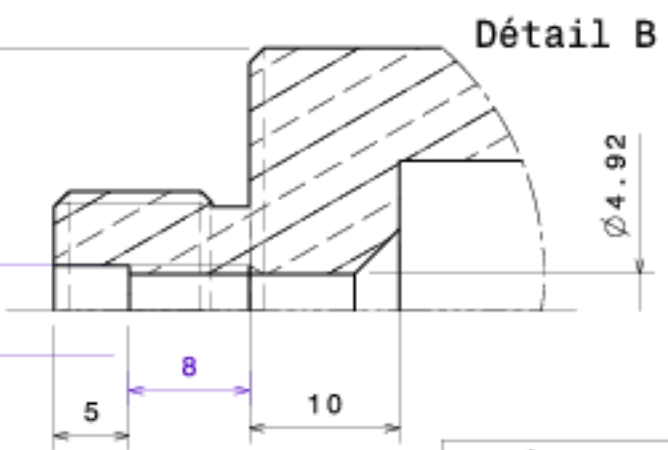


Coupe C-C

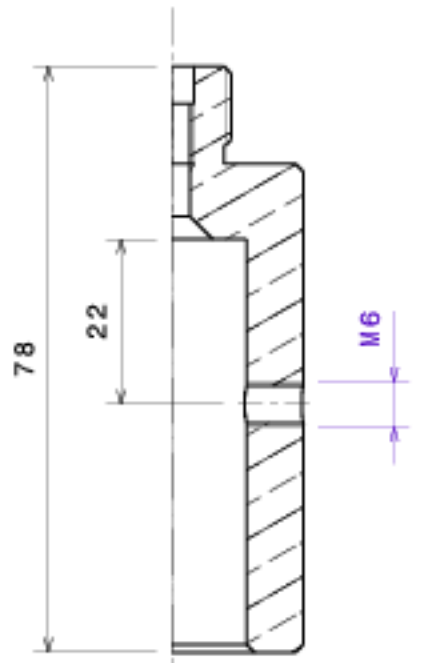
20 (+0.05 / +0.02)



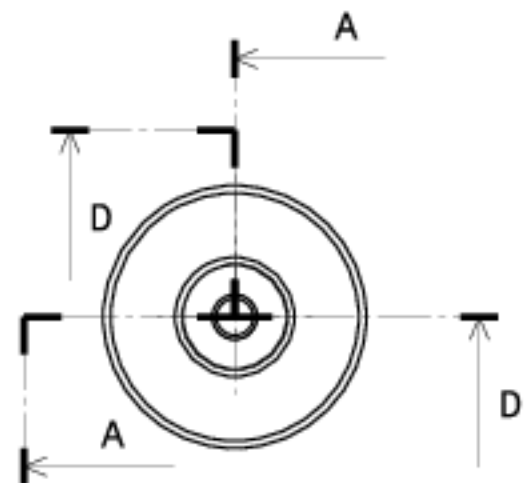
Coupe A-A



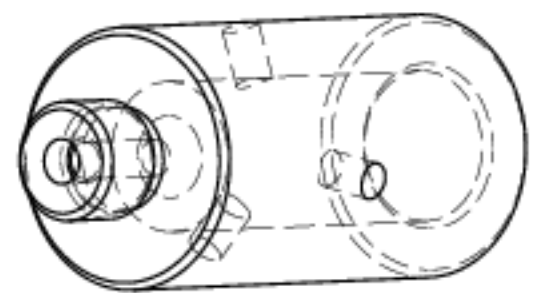
Détail B



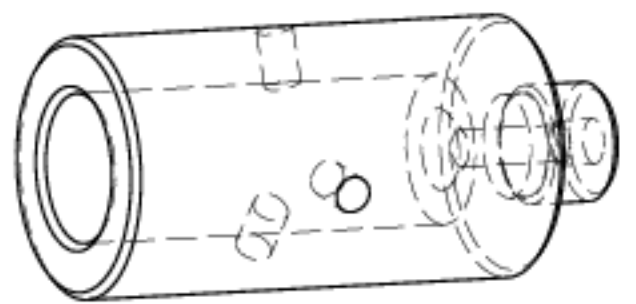
Coupe D-D



Vue de face



Vue isométrique



Vue isométrique

NOTA :  
 - ébavurer et casser les angles  
 - cotes et ajustements après revêtement

PLAN POUR FABRICATION  
 Contact CNRS : GEYSKENS Nicolas  
 01-45-07-52-63

tolérances générale ISO 2768 m H	
Matière	Laiton
Revêtement	XXX
Traitement	xxx

This drawing is our property. It can't be reproduced or communicated without our written agreement.		<b>CNRS-INSU-DIVISION TECHNIQUE</b>		
DRAWN BY <b>Lesourd</b>	DATE 06/2008			
CHECKED BY <b>Geyskens</b>	DATE 09/2009	SIZE <b>A3</b>	DRAWING NUMBER <b>02-XX-XX-XXX</b>	REV <b>2</b>
DESIGNED BY <b>Geyskens</b>	DATE 12-2007	SCALE 1:1	WEIGHT(kg) 0.382	SHEET 1/1

1

1

H G B A